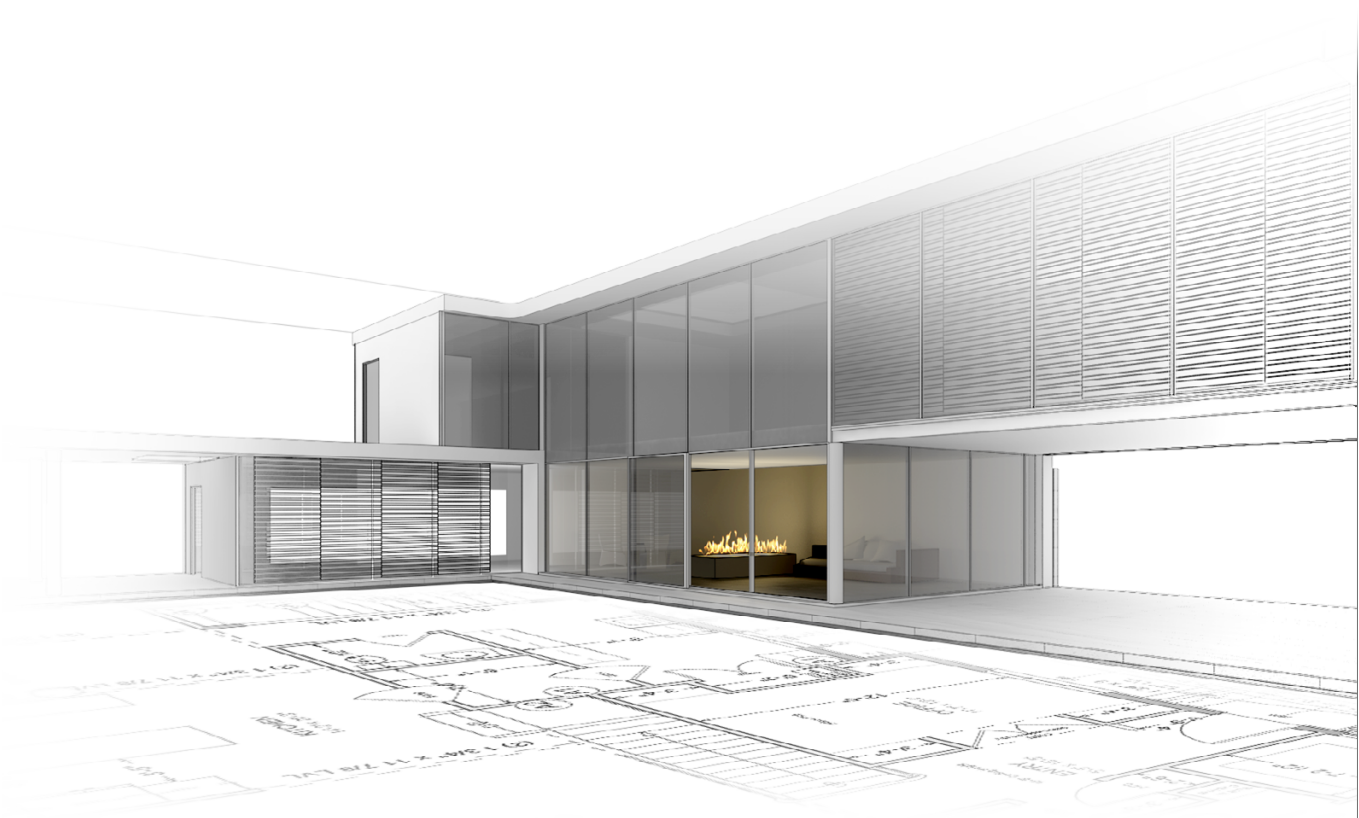


automatic inserts

intelligent fire



Fire Line Automatic 2 model E automatic inserts

FLA2 model E

*exceptional fire decoration
ignite your imagination*



FEATURES:

- No smoke
- No ash
- No chimney required
- No hard connection
- BEV technology
- Eco-fuel
- Flame size regulation
- Indoor use
- Safety sensors
- Certified
- AC power needed

TECHNICAL DATA:

Capacity: 3,5 L / [US] 0,91 gal / [UK] 0,77 gal

Burning time: 3 - 6 h

Heat output: 3,3 - 6,4 kW / 11396 - 21842 BTU

Net weight: 15,5 kg / 34 lbs

Air circulation: min. 1/h

Minimum room size:

136 m³ / 4803 ft³ (52 m² / 560 ft² with a height of 2.6 m / 8.53 ft)

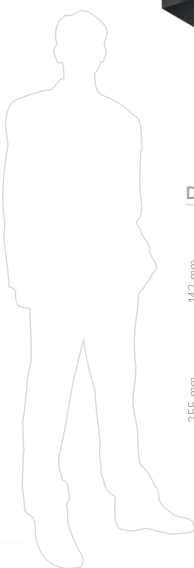
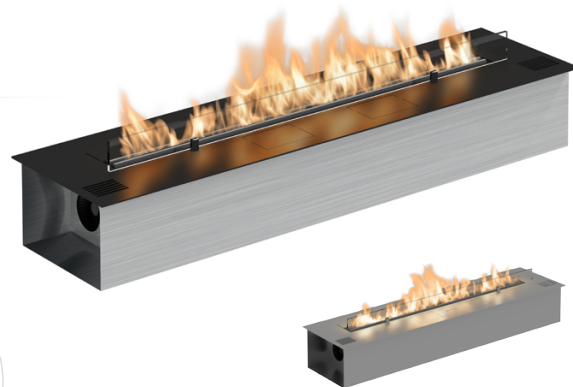
Power supply: 230 V / 115 V

Finish:

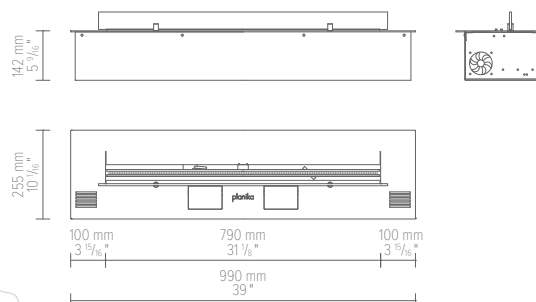
TOP: powder coated steel / brushed stainless steel,

CASING: galvanized steel,

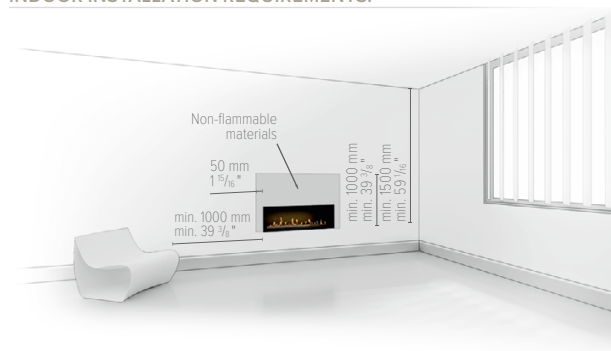
GLASS SHIELD: hardened glass



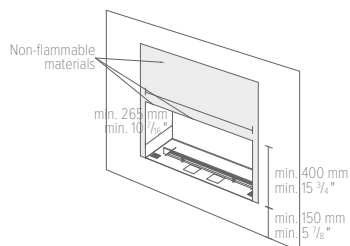
DIMENSIONS:



INDOOR INSTALLATION REQUIREMENTS:



INSTALLATION:



[download PRODUCT INSTRUCTION](#)

