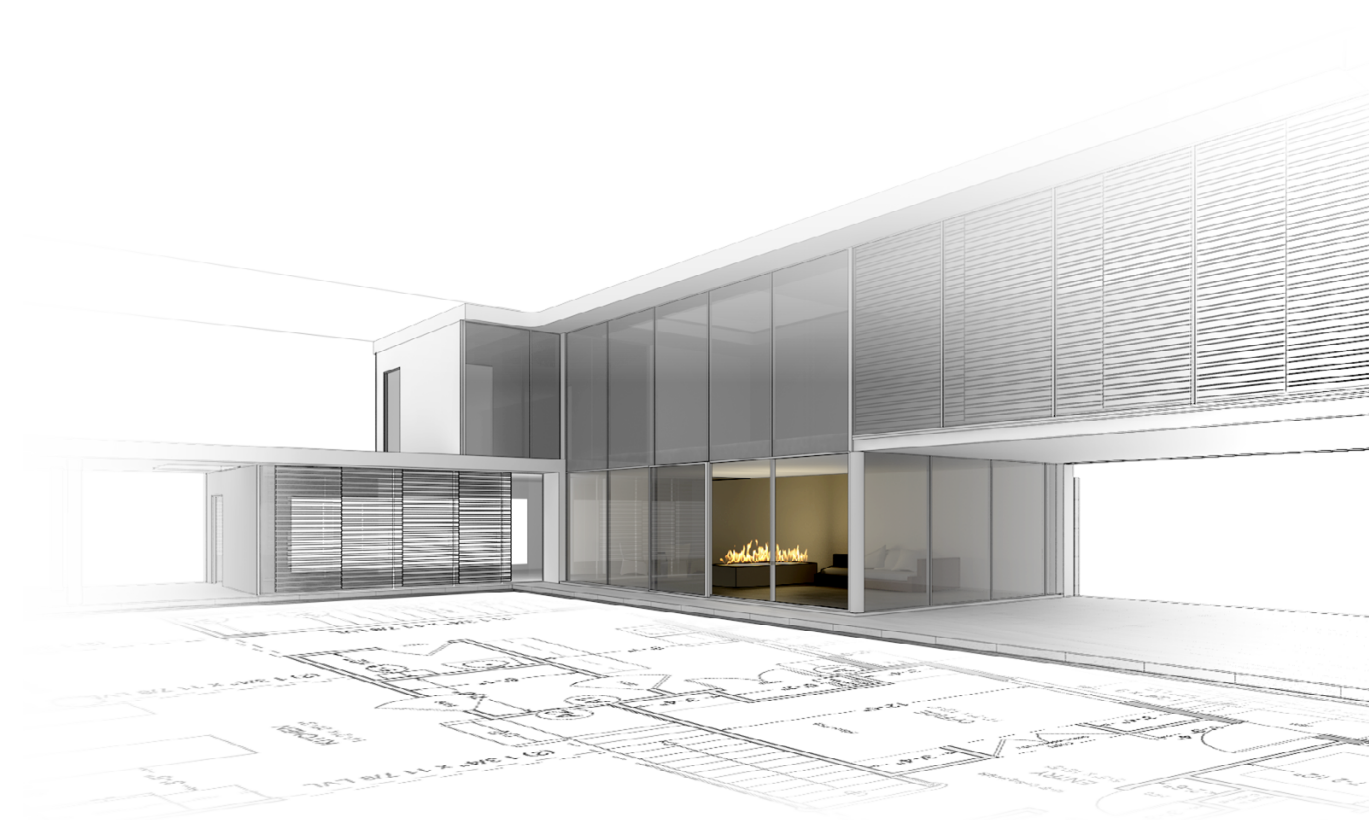


# automatic inserts

intelligent fire



# automatic inserts

Fire Line Automatic 3

## FLA3

*control your fire with mobile devices  
create an endless line of fire*



### FEATURES:

- No smoke
- No ash
- No chimney required
- No hard connection
- BEV technology
- Eco-fuel
- Made to measure
- Flame size regulation
- Remote control
- Smart Home System integration
- Indoor use
- Safety sensors
- Fast Start system
- Sleep Timer
- Built-in WiFi module
- Certified
- Child safety lock
- Optional colours
- AC power needed

### TECHNICAL DATA:

Capacity: 6,0 L / [US] 1,56 gal / [UK] 1,32 gal

Burning time: 4 - 10 h

Heat output: 3,3 - 8,4 kW / 11398 - 28490 BTU

Net weight: 25 kg / 55 lbs

Air circulation: min. 1/h

Minimum room size:

178 m<sup>3</sup> / 6286 ft<sup>3</sup> (68 m<sup>2</sup> / 732 ft<sup>2</sup> with a height of 2.6 m / 8.53 ft)

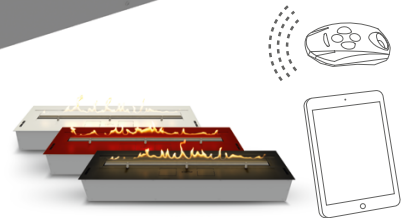
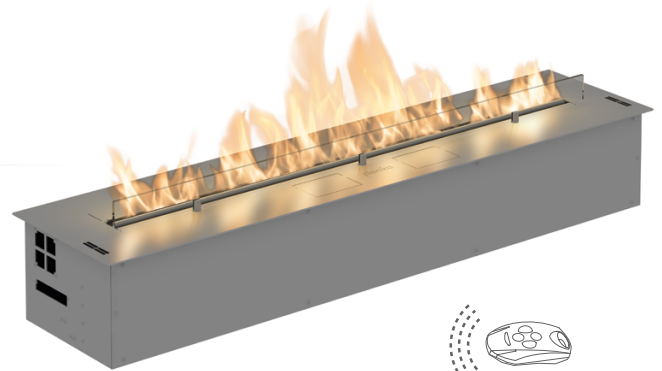
Power supply: 230 V / 115 V

Finish:

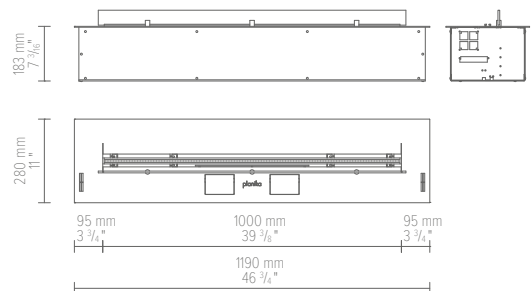
TOP: brushed stainless steel / optional RAL colours / optional black powder coated,

CASING: galvanized steel,

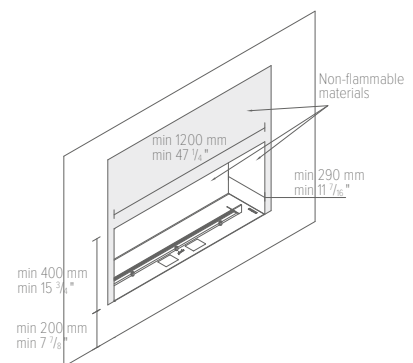
GLASS SHIELD: hardened glass



### DIMENSIONS:



### INSTALLATION:



# automatic inserts

## FireLine Automatic 3

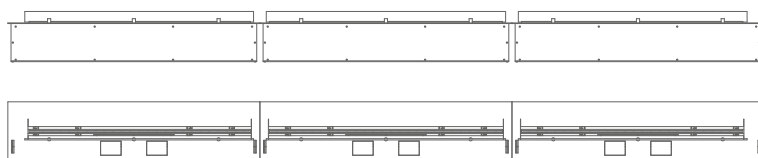
FLA3

### BESPOKE MODELS:

Planika ensures top service. To live up to our clients' requirements, we have provided the possibility to produce bespoke models, according to the client's expectations. Bio fireplace can be customized from 890 mm up to unlimited length.

### SEVERAL JOINT UNITS - UP TO UNLIMITED LENGTH:

If a longer line of fire is preferred, several units can be placed together and operated with a single remote control, giving the possibility to create an endless line of fire. Client can choose between the right, middle and left module.



### INDOOR INSTALLATION REQUIREMENTS:



download **PRODUCT INSTRUCTION**