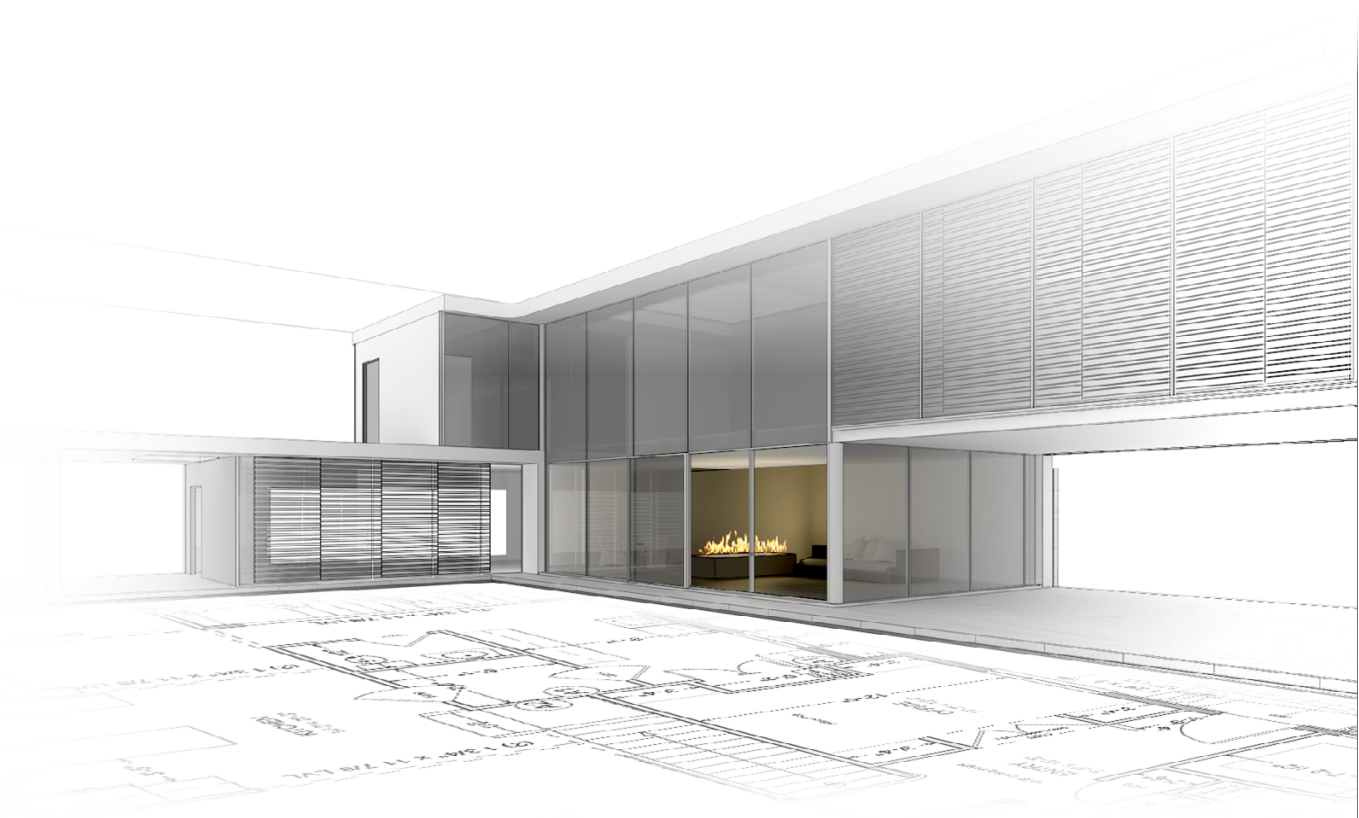


# outdoor

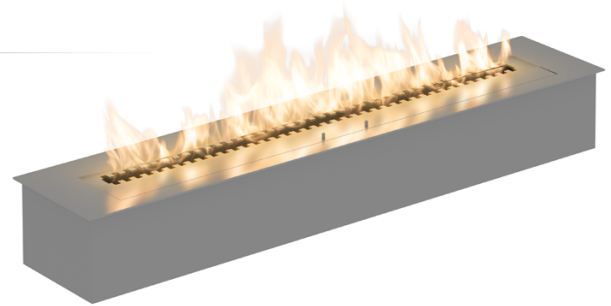
intelligent fire



# outdoor

## Fire Line Outdoor

*long line of fire designed to be luxurious outdoor fireplace*

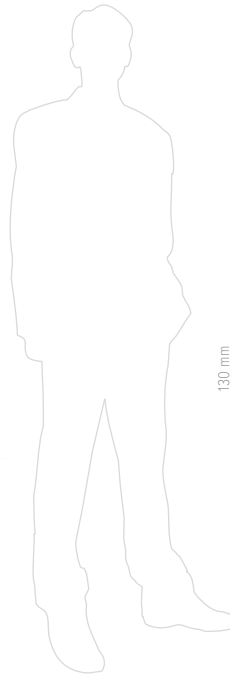


### FEATURES:

- No smoke
- No ash
- No chimney required
- No hard connection
- Eco-fuel
- Outdoor use
- Portable

### TECHNICAL DATA:

Capacity: 15 L / [UK] 3,30 gal / [US] 3,96 gal  
Burning time: ~4 h  
Heat output: 21 kW / 71673 BTU  
Net weight: 15 kg / 33 lbs  
Finish:  
TOP: brushed stainless steel,  
CASING: stainless steel



### DIMENSIONS:



### OUTDOOR INSTALLATION REQUIREMENTS:

